

DIRECTIONS FOR USE



Description

The Veinlite® LEDX is a hand-held battery powered transillumination device for visualizing veins and superficial blood vessels. It utilizes the patented* transillumination technique known as side-transillumination, which enables the Veinlite LEDX to uniformly illuminate a small region of skin and subcutaneous tissue without any areas of shadow. The shadow-free side-transillumination technique allows better visualization of veins than any other transillumination method. The LEDs emit light with the optimal wavelength for highlighting the contrast between the venous blood vessels and surrounding tissue.

INDICATIONS

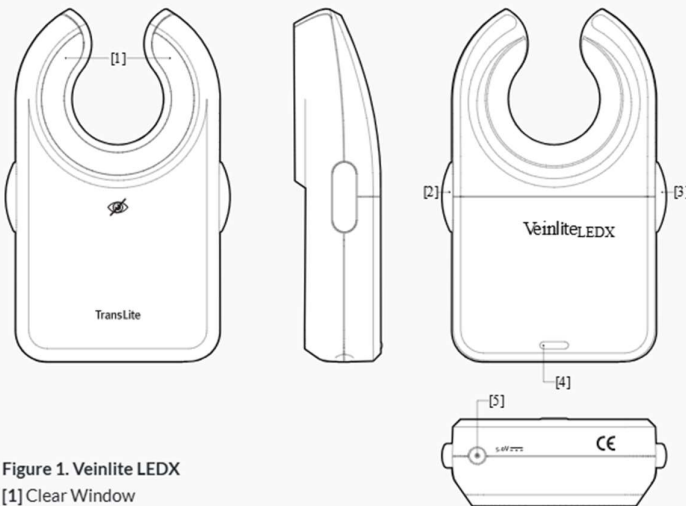


Figure 1. Veinlite LEDX

- [1] Clear Window
- [2] Orange Button
- [3] Red Button
- [4] Battery Cover
- [5] Charging Socket

Intended Use/Indications

- Venous access designed for sclerotherapy
- Improved visualization of veins in bariatric patients
- Specifically designed for phlebologists

Contraindications

- When used for internal examination
- When used without the disposable plastic cover
- Not to be used near magnetic or electromagnetic fields

Specifications

Number of LEDs	24 Orange 8 Red
Weight with battery	83g
Dimensions	102 x 65 x 21 mm
Battery	Rechargeable Lithium Ion

EXPLANATION OF SYMBOLS

REF Model Number

SN Serial Number

M Manufacturer

EC/REP EC Representative (EU Only)

Do not dispose of as unsorted municipal waste

Temp -20C/68F to +50C/122F

Humidity 45-80%

Pressure 500 - 1060hPa

Keep dry

Manufacturer date

Do Not Reuse
Do Not Sterilize

Electronic instructions available

MD Medical Device

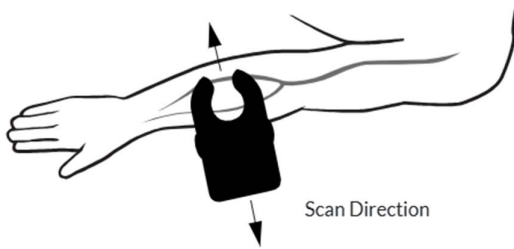
MR Unsafe

Not made with natural rubber latex

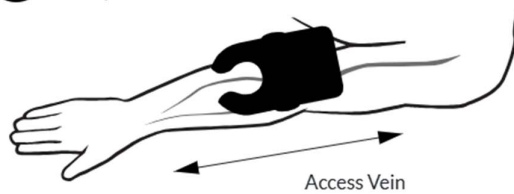
OPERATION

- Place the Veinlite LEDX against the patient's skin with the LED side in direct contact with the skin perpendicular to vein direction. Apply gentle pressure to maintain optimal skin contact.
- To turn on: press appropriate button once, (located on either side of device),
 - Orange Button [2]- Small superficial veins on fair skin
 - Red Button [3]- Deeper veins or darkly pigmented skin.
- To turn off: press the selected button(s) once a second time.

1 To scan for veins, place device against skin *perpendicular* to vein direction. Scan it forward and backward. Veins will be visible as dark lines due to transillumination.

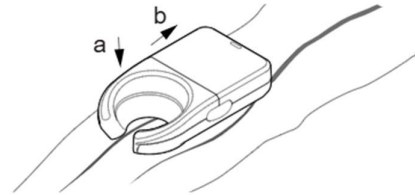


2 Once a suitable vein has been identified, rotate device 90°, parallel to vein.

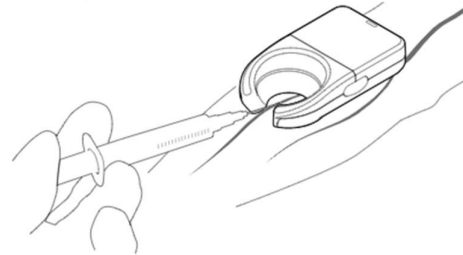


3a Apply gentle pressure on the Veinlite LEDX to secure the vein.

3b Push back slightly on the Veinlite LEDX to stretch the skin and provide traction.



4 Insert needle into vein, through the opening of device. NOTE: Discard single-use disposable plastic cover after each patient.



WARNING

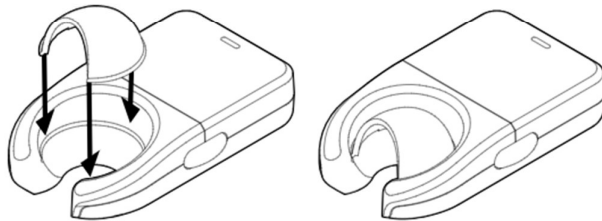
DO NOT SHINE THE LED LIGHTS IN THE PATIENT'S EYES.

ATTACHMENTS

Two patented* attachments are included with the Veinlite LEDX. The diagrams below indicate how to attach the light shield and pediatric adapter.

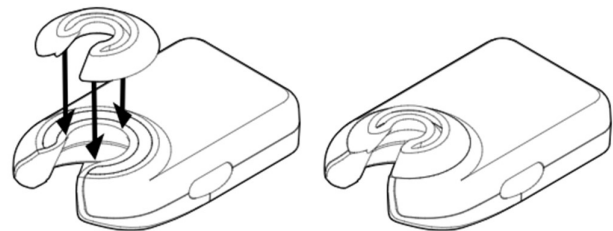
A. Veinlite LEDX Light Shield

Snap-on light shield reduces interference from overhead lighting.



B. Veinlite LEDX Pediatric Adapter

Snap-on pediatric adapter reduces the size of viewing area for use with infants.



WARRANTY INFORMATION

The Veinlite EMS PRO has a one-year parts and labor warranty. Please provide serial number, located under battery or outside of box, when you contact TransLite for any warranty issues. The warranty is valid only if the Veinlite EMS PRO is used according to the manufacturer's instructions. Before returning for repair, you must call or e-mail TransLite to obtain a return authorization code and shipping information before sending your device. No refunds will be given for unauthorized shipping.

USING THE DISPOSABLE PLASTIC COVERS

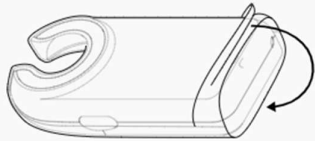
The LEDX single-use disposable plastic covers (Product # VLEDX DPC) **MUST** be used when the device comes in contact with patient's skin.

CAUTION: These plastic covers are not sterile. They should be wiped with a germicidal wipe prior to use.

- Before using Veinlite LEDX, place inside the disposable cover with the flap on the same side as the LEDs



- Pull the flap over the device to the other side.



- Wipe the LED side of the device, and any part coming in contact with the patient, with a medically approved germicidal wipe.

Precautions

- Only use device with the accompanied charging cord supplied by TransLite.
- Do not use the device while plugged into any power source.
- Avoid using alcohol on the clear plastic window, this may cause fogging.
- Do not autoclave.
- Do not use liquid on the device.

[Click here to re-order LEDX disposable plastic covers. US customers only.](#)

WARNING

Veinlite LEDX is designed for external examination only.

To avoid contamination, the LEDX must be used with disposable plastic covers.

To avoid spread of infection, always change the disposable plastic cover between patients and wipe the new cover with germicidal wipes.

LEDX is intended for use only by clinicians trained in performing vascular access, or under the supervision of a clinician.

Do not look directly into LEDs while on.

Contact Translite about adverse event in relation to this device. Should adverse event occur in E.U., notify EU Competent Authority.

Cleaning Instructions

Cleaning is not required when disposable covers are properly used.

Germicidal wipes, used sparingly, may be used to clean device if needed.

Do not submerge the unit in liquid.

BATTERY INSTRUCTIONS

Battery Level Indicator Light

Veinlite LEDX incorporates a low battery level indicator light. The orange button illuminates when the battery charge level reaches approximately 5% of full battery charge.

Recharging the Battery

The Veinlite LEDX is powered by a rechargeable lithium-Ion battery providing approximately 300 minutes of continuous usage.

- Connect the charger by inserting it into the charging socket located on the bottom of the device (5).
- The orange button will blink indicating device is charging. Once fully charged the blinking will stop.

Replacing the Battery

1. Slide off battery cover.
2. Remove battery by unplugging the connector at the top.
3. Replace the battery with a new battery by plugging it into the connector.
4. Slide battery cover back on.

NOTE: Before using your Veinlite LEDX, please read the detailed battery safety information on our website FAQ page:

<https://www.veinlite.com/faq>